

You can't manage what you can't see

When nothing less than total visibility of the IT estate will do, you need Centennial Discovery to dynamically track all IT assets deployed across the organization.

From the minute you deploy the first client agent, Discovery's patent-pending technology goes to work immediately, providing you with a complete picture of all the hardware and software on the network – regardless of location or platform.

Whether the aim is to take control of software licensing, drive down IT costs or ensure that projects are brought in on time and under budget, Discovery provides a baseline of dynamically-updated asset information across the entire network.

Why Centennial Discovery?

No other IT audit solution offers the breadth and depth of auditing features required to maintain full visibility and control of the network:

100% visibility – discover all IP-addressable hardware on the network, including PCs, servers, switches, network printers and other devices.

Transform IT Governance with dynamically-updated asset information:

Inventory & Auditing

Automatically find and track all IT assets such as PCs, servers, printers, switches and more.

Software Asset Management

Audit all applications installed on PCs and servers. Track software usage and patch status.

Security

Monitor network vulnerabilities, greynets and unwanted files on the network.

...and much more

Manage OS migrations, network mergers, leases, usage policies and other initiatives more effectively.

Network visualization - graphically map the network to understand the distribution and dependency of IT assets.

Dynamic – know about changes to the network as they happen, without waiting for scheduled audits.

Multi-platform – track hardware and software across all major enterprise platforms, including Windows, Linux, Unix, Mac OSX and AIX.

Remote auditing – keep tabs on all IT assets anywhere in the organization, whether in an office or remotely-connected to the network.

Collaboration - share asset information with multiple colleagues and create personalized web-based views of key reports.



Discovery Features & Modules



Discovery.Visual

Discovery.Visual helps IT staff, managers and executives fully visualize their IT estate by dynamically presenting all discovered IT assets in a graphical format. It is an ideal aid to scoping and tracking IT projects, as well as managing risks.

Discovery.Portal

Centennial's unique software information portal helps SAM initiatives by providing the market name, publisher, summary and (where available) licensable status of tens of thousands of applications instantly into your Discovery Control Center. The portal can save managers hundreds of hours worth of "Googling" to understand what's on the network.

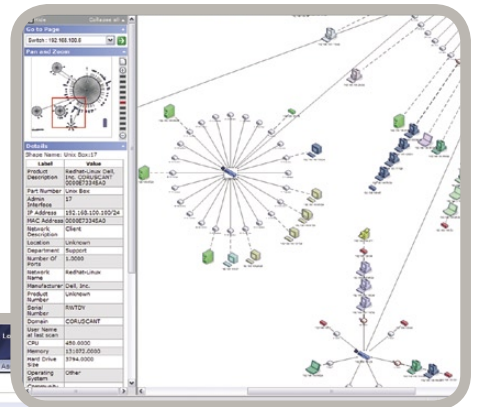
Hardware & Software Audit

No other solution can match Centennial Discovery's breadth and depth of software audit and PC inventory capabilities. Centennial Discovery provides a full dynamic audit of all network devices, wherever they are located, providing you with the latest information on the configuration, usage and physical location of all your hardware and software.

Security.Advisor

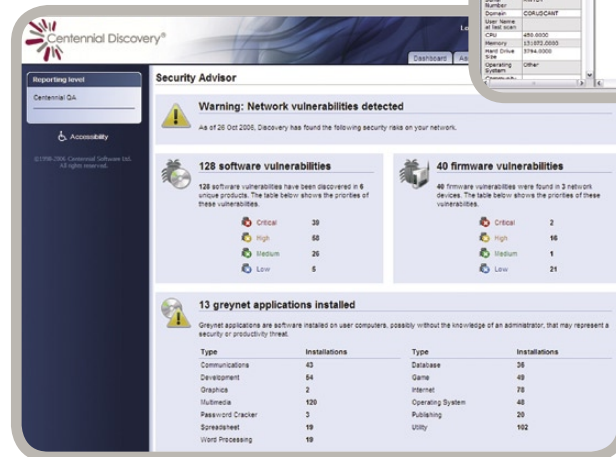
Understand when assets become liabilities by

dynamically discovering software and firmware vulnerabilities on the network with Security.Advisor. This latest addition to Discovery will also alert administrators to the presence of potentially-dangerous greynet applications on the network.



Discovery.Dashboard

With over 20 specialized web-based reports, plus a unique set of wizards to help plan and cost IT initiatives, Discovery.Dashboard offers each user the option to create their own home page, with a selection of graphs that best suit their job function - whether it is managing software license compliance, security, procurement or any other IT Governance function.



Supported platforms*

Windows	98SE, ME, NT4, XP, 2003, VISTA
Unix	RedHat 9 & ES2+, SUSE 9+, HP-UX 11i v1, IBM AIX 5L v5.3
Mac	OSX 10.3.9, 10.4.5 & 10.4.6 on PowerPC
Terminal Services	Windows 2000 & 2003, Citrix Metaframe

* Visit website for a full list of supported platforms. Vista client due December 2006